

HUNTERS®

HERE TO GET *you* THERE



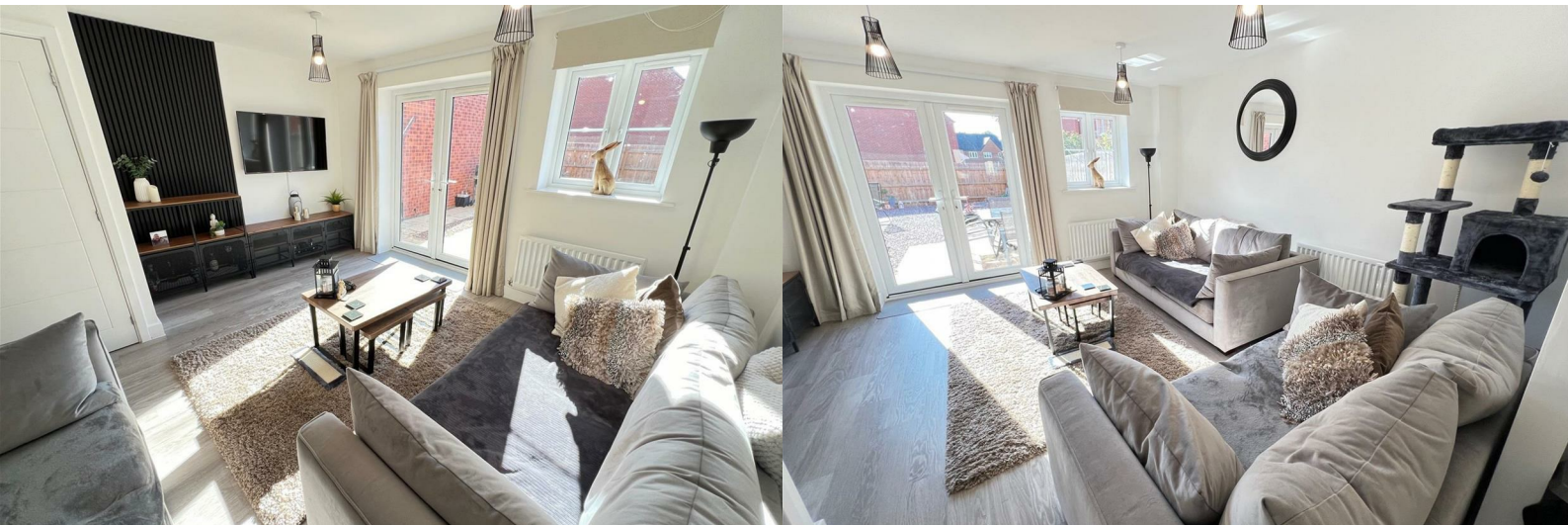
Lea Castle Drive

Kidderminster, DY10 3FB

£298,900



Council Tax: C



Lea Castle Drive

Kidderminster, DY10 3FB

£298,900



Front Of The Property

With a tarmac driveway leading to garage, decorative chipping stones, path to front door, outside tap and a gate to rear garden.

Entrance Hall

With a double glazed door to front, doors to rooms, stairs to the first floor landing and a central heating radiator.

Cloakroom

With a door from the entrance hall, WC, wash hand basin, tiled splashback, extractor fan, double glazed window to front and a central heating radiator.

Lounge

13'10" x 13'1" (4.23 x 4m)

With a door from the entrance hall, opening to the kitchen, double glazed window to rear, double glaze french doors to rear, under stairs storage cupboard and two central heating radiators.

Kitchen

12'9" x 6'10" (3.89 x 2.10)

Open from the lounge, fitted with modern wall and base units, work surfaces with matching splashback, stainless steel sink and drainer, integrated electric oven, gas hob, stainless steel cooker hood, integrated fridge freezer, dishwasher and washing machine, double glazed window to front and a central heating radiator.

First Floor Landing

With stairs from the entrance hall, doors to rooms, stairs to the second floor and a central heating radiator.

Bedroom Two

14'2" x 8'9" (4.33 x 2.67)

With a door from the landing, two double glazed windows to rear and a central heating radiator.

Bedroom Three

10'1" x 14'1" (3.08 x 4.30)

With a door from the landing, two double glazed windows to rear and a central heating radiator.

Bathroom

With a door from the landing, bath with shower over, WC, wash hand basin, part tiled walls, extractor fan and a chrome heated towel rail.

Second Floor Landing

With stairs from the first floor landing, door to bedroom one, skylight window to rear, built in storage cupboard housing boiler and a central heating radiator.

Bedroom One

16'2" x 10'10" (4.94 x 3.31)

With a door from the landing and to the en suite, double glazed window to front, loft access and a central heating radiator.

En Suite

7'0" x 3'11" (2.14 x 1.2)

With a door from bedroom one, shower cubicle, WC, wash hand basin, part tiled walls, extractor fan and a central heating radiator.

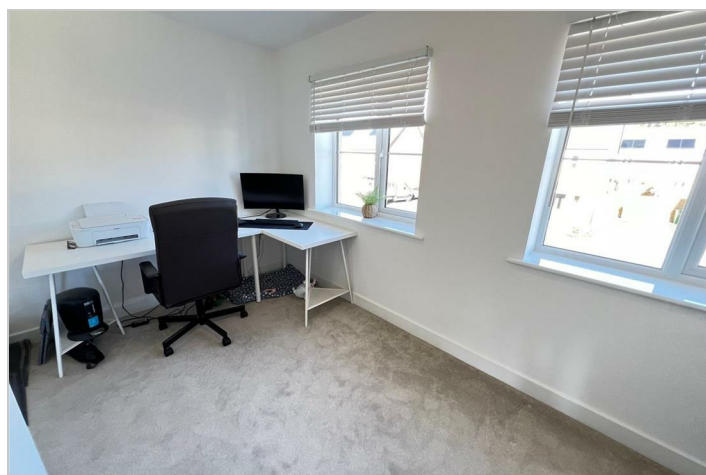
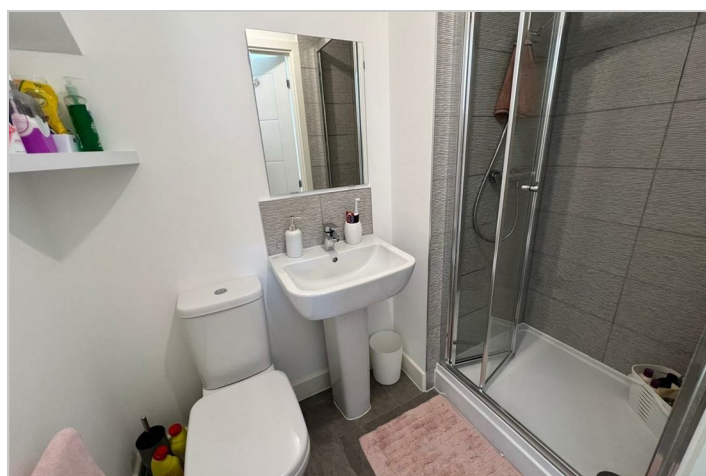
Garden

With a double glazed french doors from the lounge to a patio area with chipping stones, and gated side access to the driveway and a garage.

Garage

19'4" x 10'0" (5.9 x 3.05)

With a garage door to front, eaves store, power and light.



A map snippet from Google Maps showing a residential street layout. A red pin is placed on a street labeled 'Lea Castle Dr'. To the right of the pin, the street continues and is labeled 'Knoll Ct'. The map data is dated ©2025.

Wolverhampton

Wolverhampton Rd

Wolverhampton

Google Maps

Google, Landsat / Copernicus, Maxar Technologies

A map snippet from Google Maps showing the location of the property. The map is centered on a road junction. A blue road labeled 'A449' runs vertically. A road labeled 'Verhampton Rd' runs horizontally, intersecting A449. To the left of the junction, a road is labeled 'Wolverley Rd'. The area is mostly green, indicating fields or rural land. The name 'Cookley' is visible in the top left. A red location pin is placed on the road just south of the junction. The Google logo is in the bottom left, and 'Map data ©2025 Google' is in the bottom right.

[illegible]

Please contact our Hunters Stourbridge Office
on 01384 443331 if you wish to arrange a viewing appointment for this
property or require further information.

11a St Johns Road, Stourbridge, DY8 1EJ
Tel: 01384 443331 Email: stourbridge@hunters.com <https://www.hunters.com>

Energy Efficiency Rating		Current	Potential
<p><i>Very energy efficient - lower running costs</i></p> <p>(92-plus) A</p> <p>(81-91) B</p> <p>(69-80) C</p> <p>(55-68) D</p> <p>(39-54) E</p> <p>(21-38) F</p> <p>(1-20) G</p> <p><i>Not energy efficient - higher running costs</i></p>		83	95

England & Wales

EU Directive 2002/91/EC